

N.W. 1/4
SECTION 27, T.5N., R.1W., S.L.B. & M.

TOWN OF UINTAH & UINTAH DISTRICT

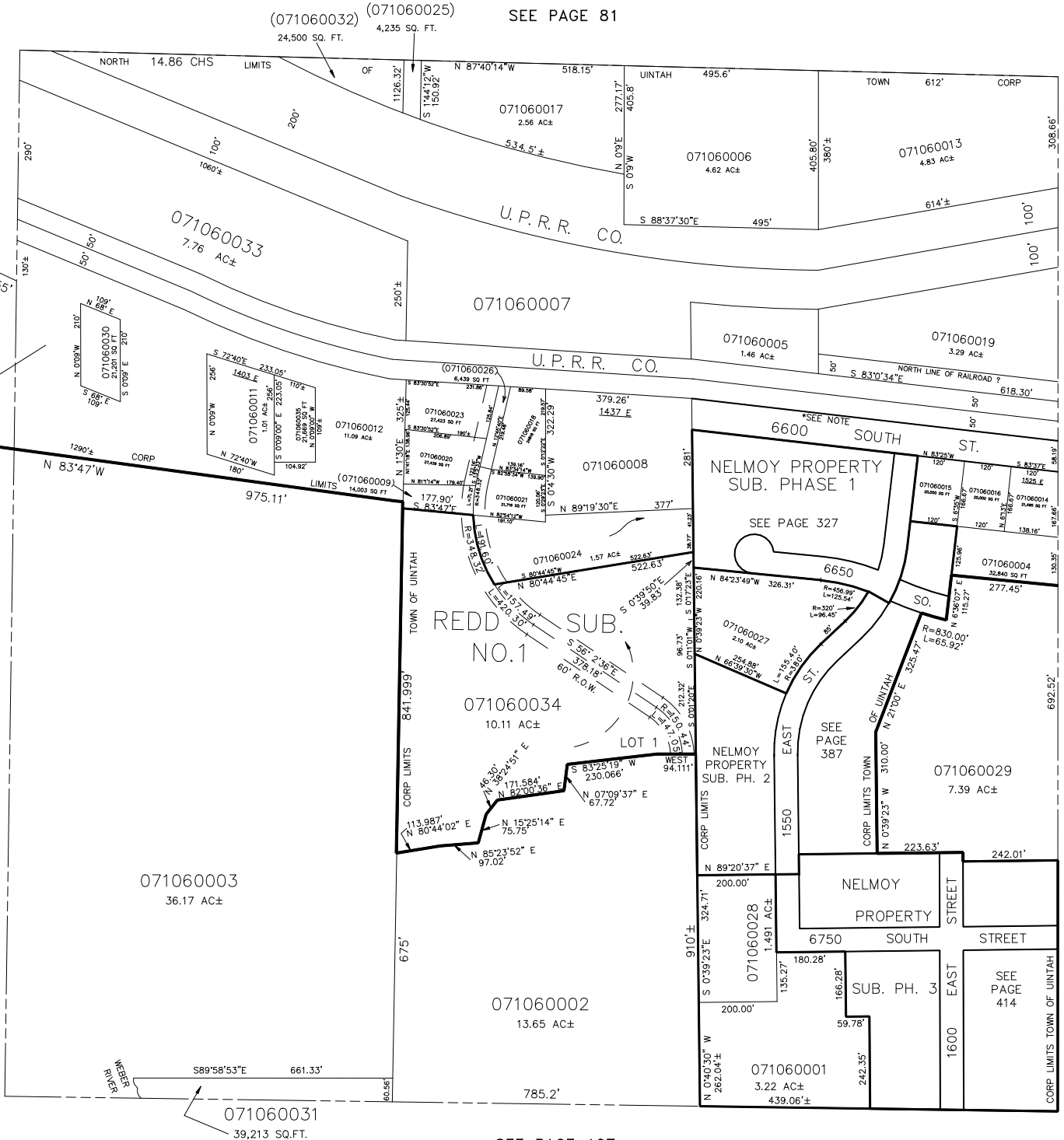
TAXING UNIT: 55, 58, 338

SCALE 1"=200'

SEE PAGE 81

SEE
PAGE
109

*NOTE:
EXISTING R.O.W. FENCES AS USED, ARE AS SHOWN
HEREON. HOWEVER, AN OFFICIAL RAILROAD MAP,
FILED IN BOOK 5 OF PLATS, PLATS 80-C SHOWS
R.O.W. AS BEING 200' ON EACH SIDE OF CENTERLINE.



SEE PAGE 105

SEE PAGE 107